

# Custom Gearbox/Wheel Speed Sensor

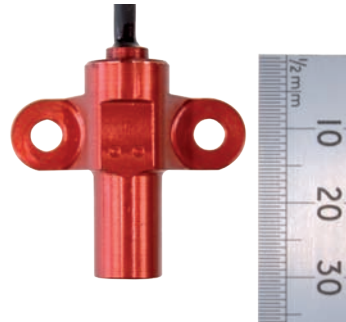


## Key Features

- Zero Speed to 20KHz
- No Moving Parts
- High Temperature Operation to 150°C
- Robust
- Thermally Stable
- Compact
- Lightweight

The Speed Sensor uses a dual element hall effect device to detect changing magnetic fields in the presence of a toothed ferrous metal target wheel. Tried and proven in F1 championship gearboxes, it is suitable for either gearbox or wheel speed sensing.

With a robust fully encapsulated construction, unique internal design and sealing method, the sensor may be fully immersed in oil at high temperature without reduction in performance.



**RoHS**   
Compliant

## Specification

### Electrical

Supply Voltage	+5VDC to +20VDC
Supply Current	<10mA
Frequency Response	0 to 20 KHz
Output	Open Collector

### Connections

Wiring	Raychem Type 55 24AWG with Viton sleeving
Connector	Unterminated

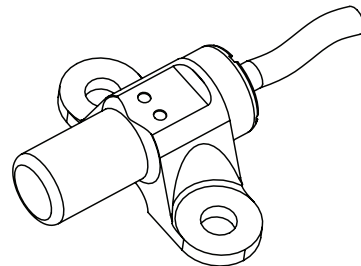
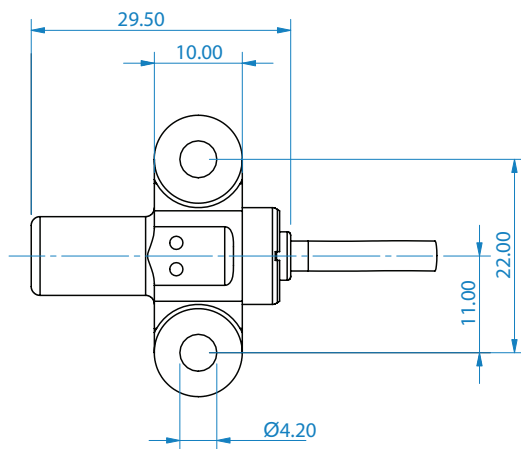
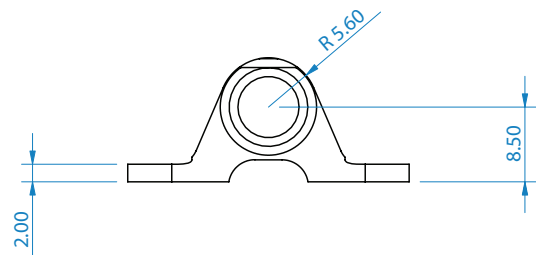
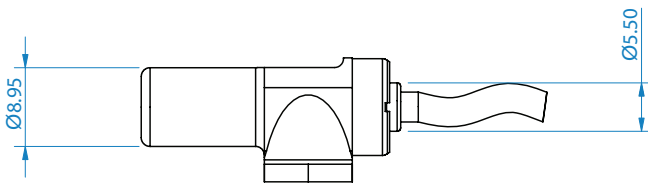
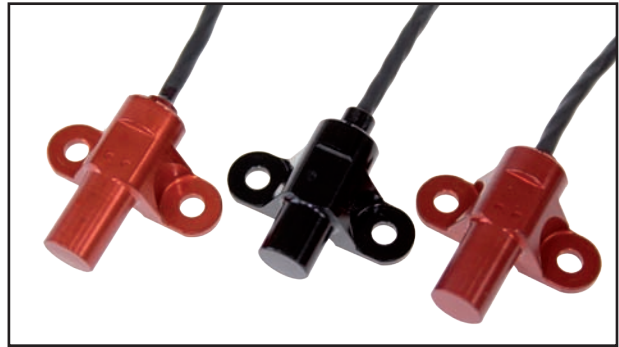
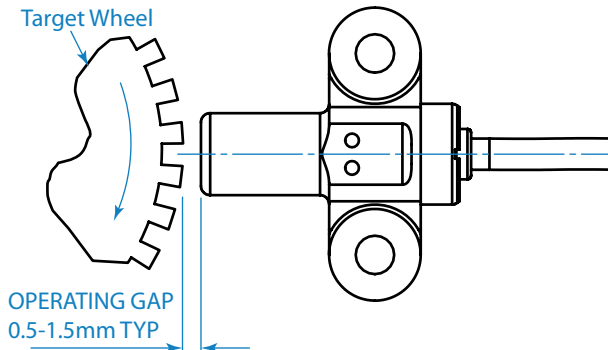
### Mechanical

Size	41mm x ø22.25mm
Mounting	M14 x 1.0 Thread (or customer specified)
Weight	from only 25g
Sensor Materials	Aluminium - anodised


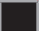

### Environmental

Protection Class	IP68
Operational Temperature	-20°C to +150°C
EMC Immunity Level	SAE J1113/2 1996 design guideline
Vibration	40g per axis (50-2500Hz)
Finish	Anodised to DEF STAN 025
Compatible Medium	Petroleums, Oils, General Automotive Fluids

# Custom Gearbox/Wheel Speed Sensor



## Wiring

	Red	+4.8 VDC to +32 VDC Supply
	Black	System & Power Ground (GND)
	Green/White	Serial Comms Input (Rx), RS485 Compatible



**Gill Sensors**  
Saltmarsh Park  
67 Gosport Street  
Lymington  
Hampshire  
SO41 9EG, UK

T: +44 (0) 1590 613 400  
F: +44 (0) 1590 613 401  
E: info@gillsensors.co.uk

[www.gillsensors.co.uk](http://www.gillsensors.co.uk)



Copyright © Gill Sensors 2011  
SD1616 - Iss 1  
Gill Research & Development Ltd  
Reg No. 3154453 Registered Office: The George Business Centre, Christchurch Road, New Milton, BH25 6QJ